

TALIS LIGHT SYSTEM

RAPID HANG GUIDE



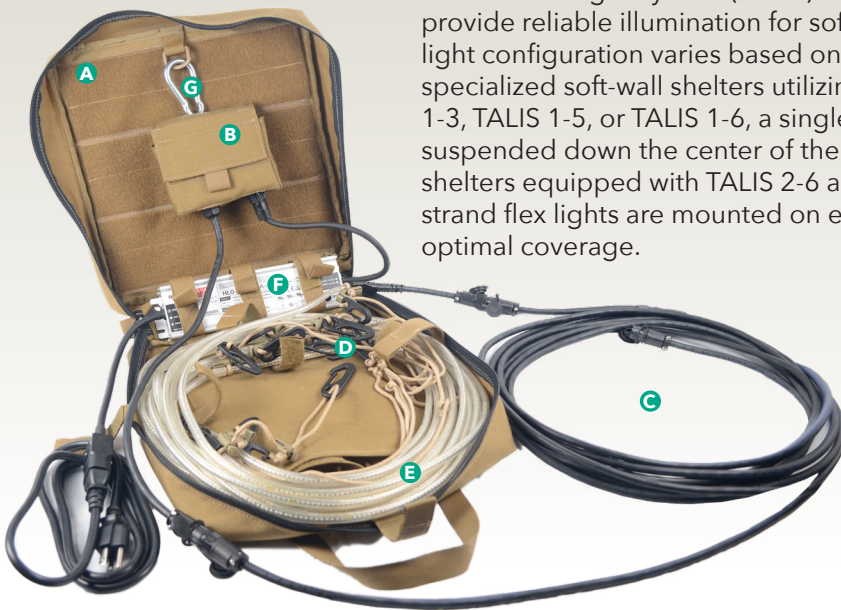
TACTICAL LIGHT SYSTEM
(TALIS)

MODEL NUMBERS:
TALIS 1-3
TALIS 2-6
TALIS 2-9

Your new TALIS Light System.

HERE, YOU'LL FIND A RUNDOWN
OF WHAT'S INSIDE.

The Tactical Light System (TALIS) is engineered to provide reliable illumination for soft-wall shelters. The light configuration varies based on the shelter size. For specialized soft-wall shelters utilizing TALIS 1-2, TALIS 1-3, TALIS 1-5, or TALIS 1-6, a single strand flex light is suspended down the center of the shelter. For larger shelters equipped with TALIS 2-6 and TALIS 2-9, single strand flex lights are mounted on either side to ensure optimal coverage.



- A TALIS CARRIER: HOUSES AND SECURES THE ENTIRE SYSTEM.**
- B MAIN CONTROL BOX: MANAGES POWER (ON/OFF), DIMMING, AND SWITCHES BETWEEN WHITE LIGHT AND BLACKOUT MODES.**
- C DC OUTPUT CABLE: CONNECTS THE MAIN CONTROL BOX TO THE SINGLE STRAND FLEX LIGHT.**
- D HANGER: SUPPORTS THE SINGLE STRAND FLEX LIGHTS**
- E SINGLE STRAND FLEX LIGHTS: PROVIDES RELIABLE ILLUMINATION INSIDE SOFT-WALL SHELTERS.**
- F POWER SUPPLY WITH POWER CORD: CONVERTS 110/120V AC TO 24V DC, DELIVERING 10A TO THE SYSTEM.**
- G CARABINER: QUICK-CONNECT SOLUTION FOR HANGING**

Let's get started.

FIRST identify the best spot inside the shelter to hang the carrying case. Choose a central location where it's easy to access the control panel and regulate the lighting.



FULLY OPEN THE CARRIER: The internal components will be exposed.



INVERT THE CARRIER AND ZIP CLOSED: The exposed components can now be accessed.



Setting up the System

OUR FLEXIBLE TACTICAL LIGHT SYSTEM CAN REACH EVEN THE MOST DIFFICULT SPACES

3.

UNROLL THE LIGHT: Remove the single strand flex light and place under where you want to hang it on the ceiling.

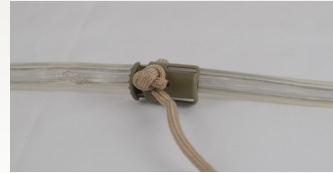
4.

CONNECT THE SNAP HOOKS: Place the single strand flex light in your work area with the flat side up and slide one hanger onto the end of the light.

Press the button on the cord lock, pull the cord tight around the light.

ENSURE: When the cord lock is pulled tight, the cord lock should be snug on the flat side of the single strand flex.

REPEAT: The hangers should be spaced appropriately to the soft wall shelter's attachment points, in most cases 1 meter (3 Feet) apart.



5.

CONNECT MAIN POWER: Unpack the Power Cable, match the 3-pin plug connector on the power supply with the 3-pin socket connector on the power cable and connect them together.



6.

CONNECT THE DC POWER: Insert the 2-pin plug connector coming from the power supply into the 2-pin socket on the control box by aligning the notches and turning. Then stretch out the DC Output Cable coming from the control box. Match and insert the 2-pin socket connector on the DC Output Cable with the 2-pin plug connector on the Single Strand Flex, align the notches and connect them together.



NOTE: The TALIS 1-3 has one light strip, the TALIS 2-6 and TALIS 2-9 has two light strips

System Installation

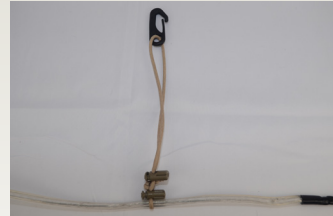
7.

HANG THE LIGHT: Hang the Single Strand Flex Light by attaching the hook end of the hanger to the soft wall shelter's attachment points.

8.

ADJUST THE HEIGHT: Depress the cord lock release button on the cord lock closest to the nylon hook and slide the cord lock down toward the Single Strand Flex Light until the desired height is reached.

NOTE: If both cord locks are against each other and the Single Strand Flex Light is still too low, while depressing the cord lock release button for the cord lock closest to the nylon hook, continue pulling on the cord to draw the cord locks up toward the nylon hook until the desired height is reached.



9.

CABLE MANAGEMENT and CARRIER PLACEMENT: Route the DC Output Cable along the ceiling and wall of the soft wall shelter to the location where the Main Control Box will be located. Attach the carabiner to the D-rings on the TALIS Carrier and hang it in desired location. If the carabine is missing, cord may be used.

10.

POWER UP AND CHECK: Plug 3-prong power cord into 110/120 VAC outlet, power on and check the functionality of the completed system using the control box.



Take a closer look at the control panel.

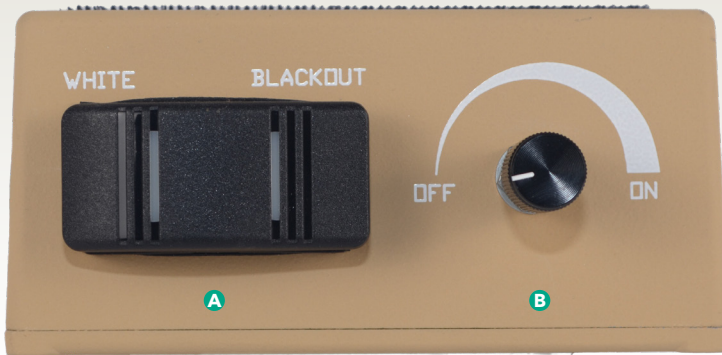
THIS IS WHERE YOU'LL OPERATE THE LIGHTS.

A LED TOGGLE

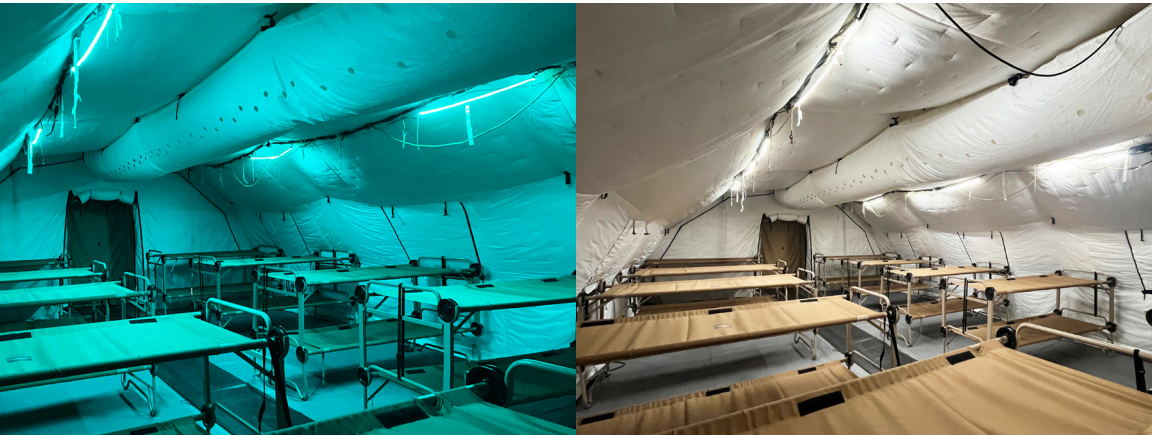
Switches between white light and blackout modes

B ON/OFF LIGHTING CONTROL DIAL

Adjusts light output to low, medium or high.



INSPECT the control panel carefully. Make sure the lighting control dial turns smoothly and clicks off and on. Then check the LED toggle, listening for a hard click at each setting.



Need replacement parts?

HERE'S HOW TO ORDER THEM.

PART NUMBER	COMPONENT	DESCRIPTION
24-7-8010	TALIS Carrier	Fabric enclosure to protect TALIS
24-7-8020	TALIS Main Control Box Pouch Carabiner	Fabric enclosure to protect TALIS Main Control Box Assembly Metal ring which facilitates suspending TALIS inside soft wall shelter
24-7-2000	TALIS Main Control Box Assembly	Metal case with dimmer and toggle switch
24-7-3000-1	Single Strand Flex Light, 2 m	One two meter Single Strand Flex (0.5m White/1.0m Blue-Green/0.5m White)
24-7-3000-2	Single Strand Flex Light, 3 m	One three meter Single Strand Flex (0.5m Blue-Green/2.0m White/0.5m Blue-Green)
24-7-3000-3	Single Strand Flex Light, 5 m	One five meter Single Strand Flex (0.5m White/1.0m Blue-Green/2.0m White/1.0m Blue-Green/0.5m White)
24-7-3000-4	Single Strand Flex Light, 6 m	One six meter Single Strand Flex (1.0m White/1.0m Blue-Green/2.0m White/1.0m Blue-Green/1.0m White)
24-7-3000-5	Single Strand Flex Light, 9 m	One nine meter Single Strand Flex (1.0m White/1.0m Blue-Green/2.0m White/1.0m Blue-Green/2.0m White/1.0m Blue-Green/1.0m White)
24-7-4000-1	DC Cable Output Assembly for the TALIS 1-2, TALIS 1-3, TALIS 1-5 or TALIS 1-6	Two conductor, 16 AWG, cable with two connectors, one to connect to either a 2, 3, 5 or 6 meter Single Strand Flex Light and Main Control Box pigtail
24-7-4000-2	DC Cable Output Assembly for the TALIS 2-6 or TALIS 2-9	Two conductor, 16 AWG, cable with three connectors, two to connect to either a 6 or 9 meter Single Strand Flex Light and the other to connect to the Main Control Box pigtail
24-7-5000	Power Supply Assembly	Commercial 240W, 24 VDC power supply with power cable
24-7-7000	Hanging Kit Assembly	Used to hang the Single Strand Flex from the shelter ceiling
24-7-6000	Battery Cable Assembly (Optional)	Multiconductor cable with adapter for the BB-2590/U (sold separately) and connector to the Main Control Box
24-7-8030	BB-2590/U Pouch (Optional)	Fabric enclosure to protect the BB-2590/U

CALL US. 724.841.0101

SEND AN EMAIL. admin@FrontlineLighting.com

ORDER ONLINE. frontlinelighting.com

WARNINGS!

Failure to follow these instructions may result in injuries, fatalities or permanent damage of the MFlex Light Kit system and void the warranty.

- Only use an external power supply input within these specifications: 100-277 Vac @ 50/60Hz.
- Never power lights inside the Carrier.
- Never power lights when coiled. EXCEPTION: In freezing conditions (32°F/0°C or below), apply power to the lights for 1 minute before uncoiling for use.
- Do not store or operate the TALIS next to any open flame.
- Protect lights and wiring from being cut or stretched.
- Do not hang anything from the lights or power cables.
- Always disconnect lights from power source before servicing.
- Do not immerse the system in water.
- Clean only with a soft dry cloth. Do not use solvents or abrasive materials.
- Avoid long-term eye contact with the lights when illuminated.

LIMITED 1-YEAR WARRANTY

View details at frontlinelighting.com.

To receive a copy of the warranty, contact:

US.sales@frontlinelighting.com 724-841-0101

INT.sales@frontlinelighting.com +61-419-209-108

FRONTLINE LIGHTING, LLC

545 Chicora Road

Suite 9B

Butler, PA 16001

US.sales@frontlinelighting.com 724-841-0101

INT.sales@frontlinelighting.com +61-419-209-108